

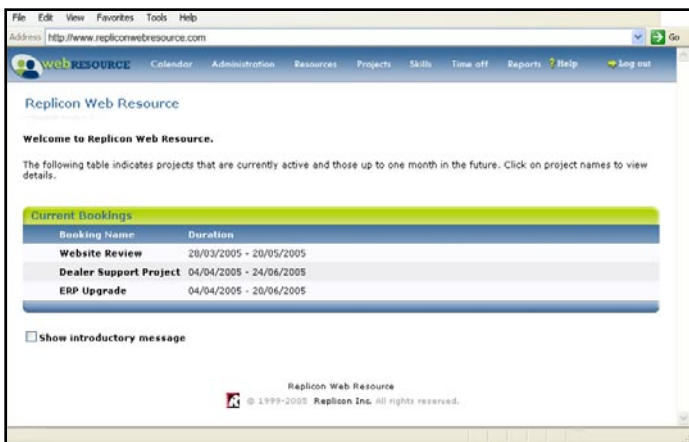
# Features and Benefits

Web Resource is a simple, easy-to-use resource scheduling tool, designed to help you to optimize your workforce, through resource tracking, skills management, and availability planning. Web Resource lets you define your resources, allocate them to projects, then view the results either on screen or in printed reports.

When defining your resources, you can associate them with custom defined skills and skill levels. You can then allocate these resources to projects when you set up new projects, or simply add placeholders in the project and add the resources later. Once your schedules are complete, you can use the calendar views or reports to gain visibility of resource availability and utilization, and project staffing.

## Simple, Easy-to-use Interface

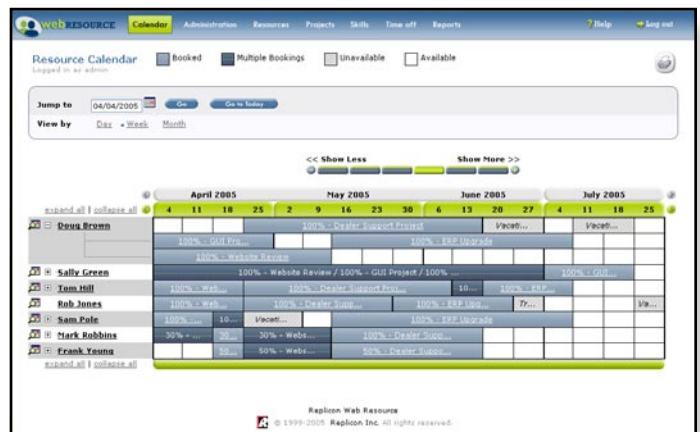
- 100% web-based; access from any internet browser
- Implement in less than a day
- Intuitive design requires little to no training
- Very limited administrative tasks required



**The Welcome Screen** - A snapshot of your current project assignments

## Centrally Manage Your Resources

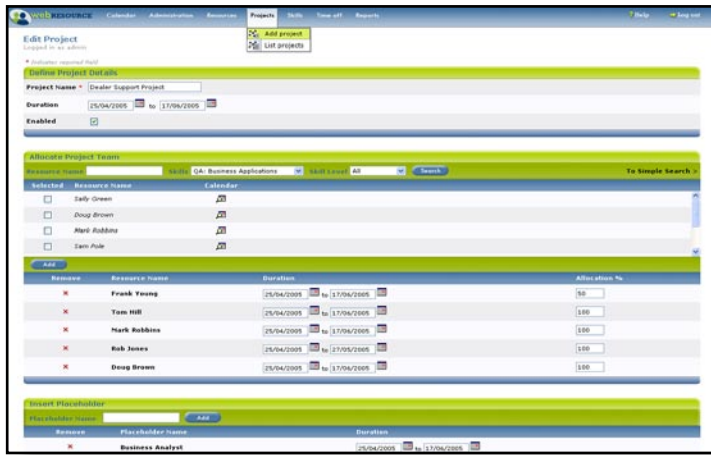
- Get a complete picture of your resource pool
- Define an unlimited number of skill types and skill levels
- Assign multiple skill levels and skill types to each resource
- Book and view time off for your resources



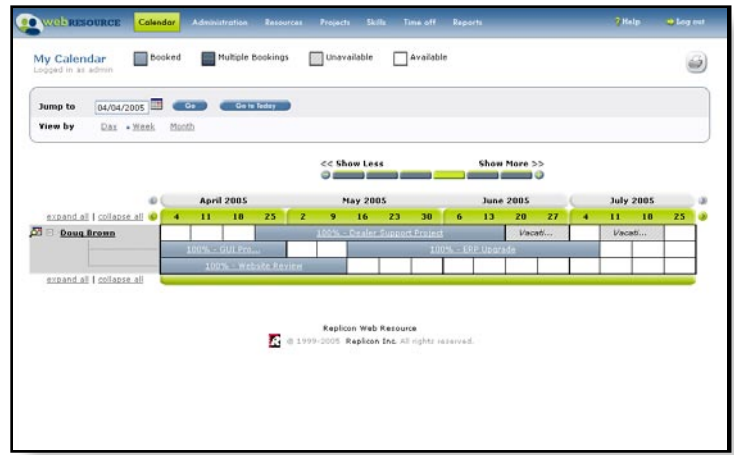
**The Resource Calendar** - A snapshot of project assignments for all of your resources

## Simple, Quick Resource Scheduling

- Quickly set up your projects with start and end dates
- Easily assign resources to your projects from any internet browser
- Allocate your resources based on availabilities, skills, and skill levels
- Share resources across multiple projects, concurrently
- Assign percentage allocations of resources to projects
- Assign placeholders to indicate resource shortages



**The Project Details Screen** - Search for and assign your resources



**My Calendar** - Employees can view their individual project assignments

## Real-time, Flexible Calendar Views

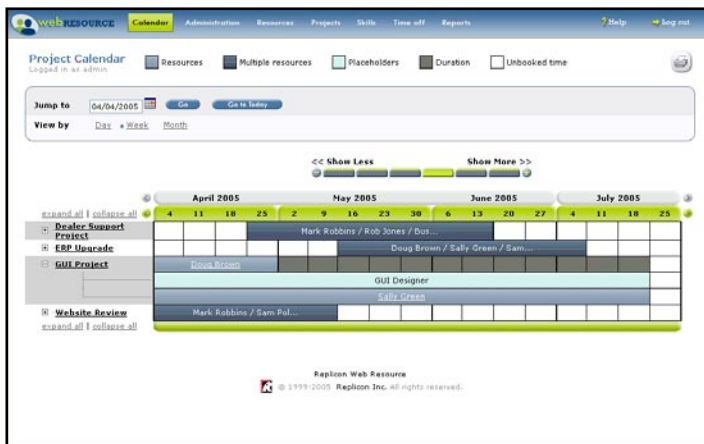
- View calendars by project, by resource, or by individual
- Zoom into or out of the calendar to view by day, week, or month
- Identify and resolve resource booking conflicts
- Recognize project overlaps or project openings

## Snapshot Reporting

- View, print, and share reports
- Conflict, Resources, Projects, and Resource Allocation reports

## Highly Configurable and Flexible

- Scalable for any size and type of organization
- Define unlimited skill types and skill levels
- Define unlimited types of time (e.g., vacation, sick time, etc)
- Configurable calendar views



**The Project Calendar** - Displays resources assignments

## Want to Learn More About Web Resource?

- For a free trial version, click here.
- For an online quick tour, click here.
- To attend a 15-minute webinar, click here.

## A Global Reputation for Excellence

Replicon Inc. develops workforce solutions of choice for large and small organizations worldwide, and is a Microsoft Certified Solution Provider. With over 2000 customers in 52 countries, Replicon is meeting the needs of Global 2000 companies including Hewlett Packard, Lucent Technologies, Sony Music Entertainment Inc., and Compaq.

## Engage Your Employees

- Employees can view the current and upcoming projects and book time off accordingly
- Employees have visibility into their skills inventory, empowering them to grow
- Allow your resources to schedule and view their own time off
- Granular permissions let you set up and assign unlimited permissions levels and types

[www.repliconwr.com](http://www.repliconwr.com)

Copyright © 2005 Replicon Inc. All rights reserved.

**Replicon Inc.**

Voice: 403.262.6519

Fax: 403.233.8046

Toll-Free (North America) 1.877.737.5420

E-mail: [info@replicon.com](mailto:info@replicon.com)