



# Web TimeSheet Oracle Installation Procedures

Version 4.0

*the most complete web-based  
time & expense management solution...*

[www.replicon.com](http://www.replicon.com)





## Executive Summary

---

Welcome to the *Oracle Installation Procedures* Document. If you are in charge of Testing or Administering Web TimeSheet for your company, and want to know how to get up and running quickly without any problems, then this guide has been created just for you.

Through primary research the design of this document is to guide you the customer through the setup, quickly, and hassle free. This document provides the complete chronological step-by-step process that to follow when setting up the Oracle version of Web TimeSheet.

This guide is intended to be quick informative reference material when installing Oracle and then Replicon's Web TimeSheet.



# Contents

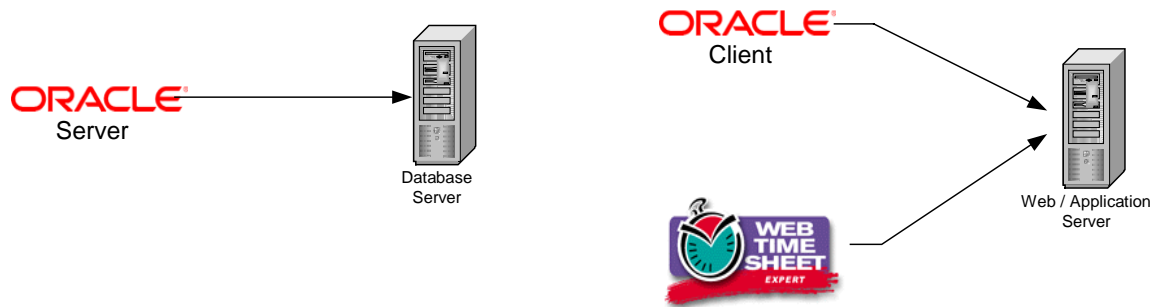
---

<b><u>SERVER TYPE INSTALLATION</u></b> .....	<b>4</b>
<b><u>CREATING A NEW DATABASE SCHEMA</u></b> .....	<b>4</b>
1) Log into Oracle for the First Time: .....	4
2) Creating a new User: (Similar to unique DB's in SQL).....	5
3) Existing Schema for Web TimeSheet.....	5
<b><u>INSTALLING WEB TIMESHEET (ORACLE VERSION)</u></b> .....	<b>6</b>
<b><u>CONTACTING TECHNICAL SUPPORT</u></b> .....	<b>11</b>

## Server Type Installation

---

The diagram below displays which application needs to be installed on which server.



## Creating a new Database Schema

---

Once Oracle is installed on your computer you must create a "User Schema" on your server. Before attempting to try a fresh install of Web Timesheet (in Oracle) you first need to create a schema.

### 1) Log into Oracle for the First Time:

Sign on to Oracle\OraHome81\Application Development\SQL Plus  
The default Login In:

Username: <System>  
Password: <Manager>  
Host String: <Enter the SID, or Global database name>

This information will be from the database you set up on your server.

You will then see the following prompt:

**SQL>**

## 2) Creating a new User: (Similar to unique DB's in SQL)

### Step 1:

- After the *SQL>* prompt type in:  
create user <user name> identified by <password>; *Click "Enter"*
- After creating the <user name> and the <password>, please write these down, as you will need them when you install Web Timesheet.
- The next line will tell you the "user has been created", and return you to the *SQL>* prompt

### Step 2:

- Type in: grant connect, resource to <user name>; *Click "Enter"*
- The next line will say, "grant connected"

## 3) Existing Schema for Web TimeSheet

If you already have a schema set up for Web Timesheet and want to use it again. Please follow the instructions below.

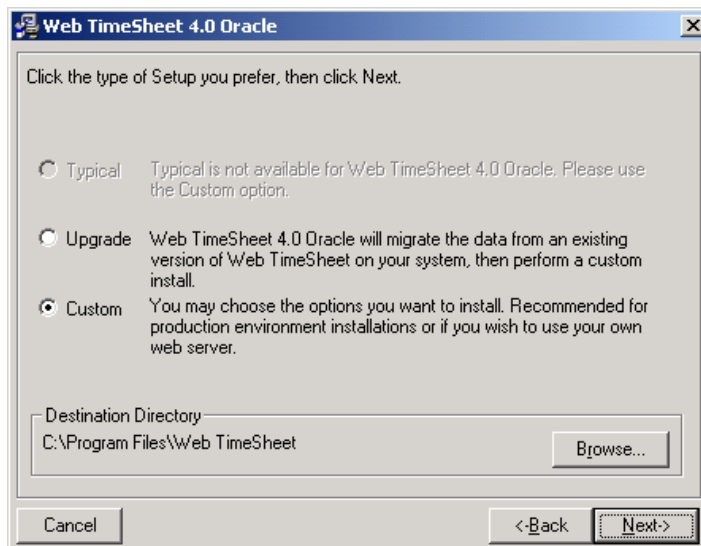
1. Sign on to Oracle through SQL Plus
2. Delete all the tables, indexes, foreign keys, views, and sequences.

## Installing Web TimeSheet (Oracle Version)

---

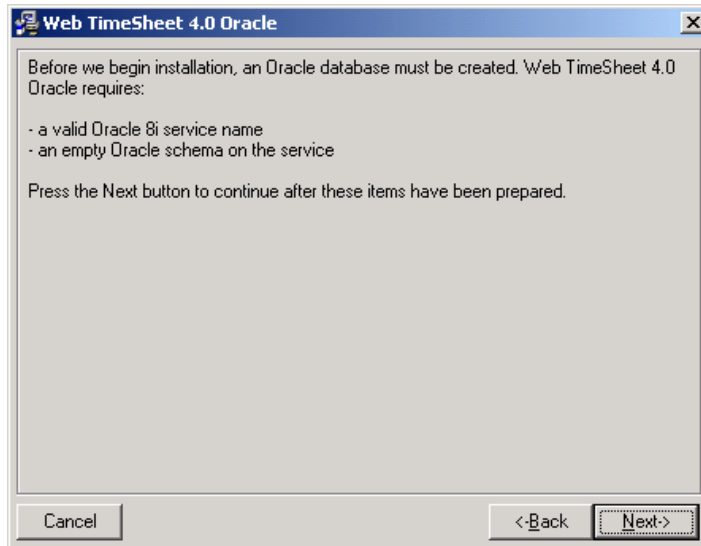
Please ensure that you have Oracle client tools installed on the machine that you are going to install Web TimeSheet on. If you have just installed Oracle Client tools on the machine then you will have to reboot it before you can install Web TimeSheet. Once all the criteria have been met, please double click on the “*wts40ora.exe*” file to begin the installation process.

1. The first screen to show up will be the Installation screen. A Welcome window will pop up, please read this carefully before proceeding.
2. Read the License Agreement carefully and click *Accept* to continue.
3. In the Oracle version, the setup screen allows the user to select one of two options, either ‘*Upgrade*’ or ‘*Custom*’. If this is your first time using Web Timesheet you will select the ‘*Custom*’ option, and click “*Next*”.



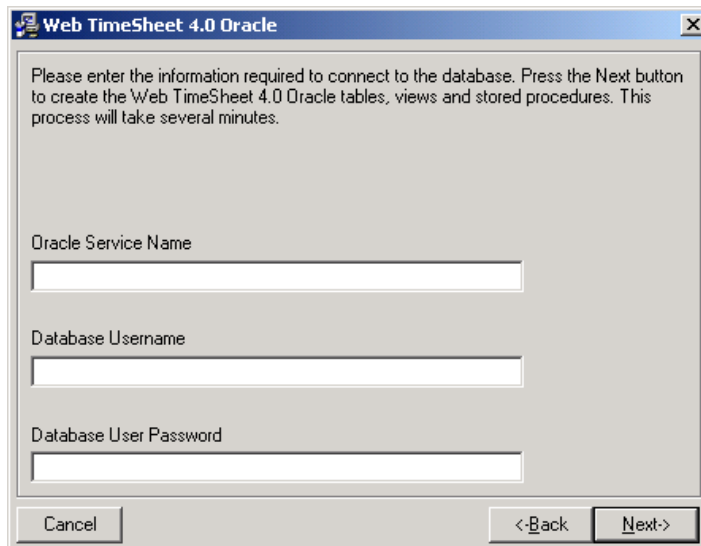
4. The Installation Wizard saves all Web TimeSheet files in the default directory C:\Program Files\Web TimeSheet. If you prefer to save the files in a different directory, enter the directory path in the space provided. If you do not know the network path, you can use the Browse button to locate the appropriate directory on your network.

5. Once you have selected the destination directory; Click “Next”



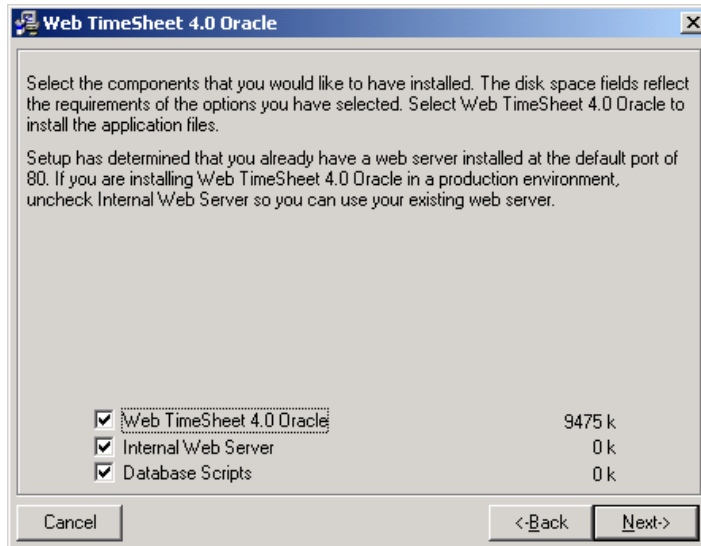
**Note:** A reminder window will be displayed to make sure you have a database set up and are ready to proceed with this install.

6. Click “Next” to continue.
7. Please make sure you fill in the information correctly or this will create an error message. (Can use either Client SID or the Global Database Name for the Oracle Service Name)

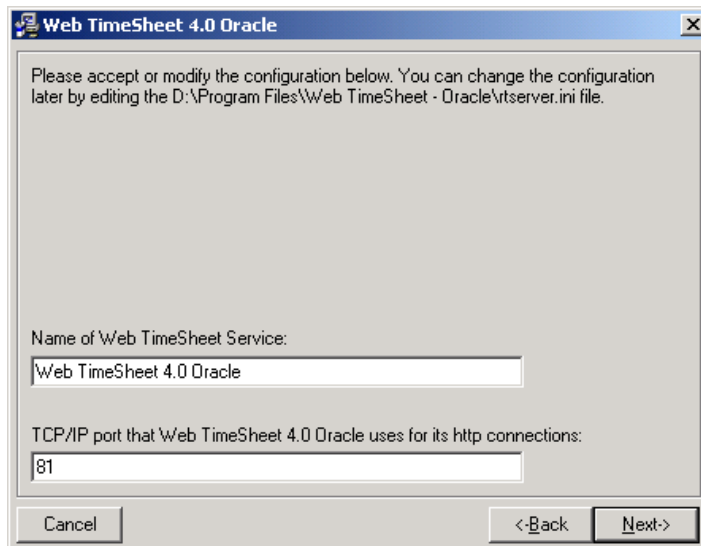


8. Click “Next”; this could take several minutes to compile.

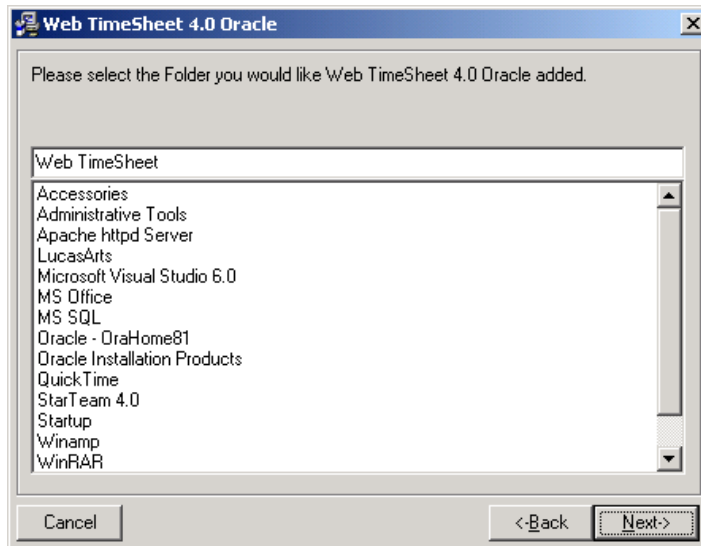
9. Select the components that you desire at the components window, then click "Next".



10. Now you can enter a name for the service and port number or use the defaults, click "Next"



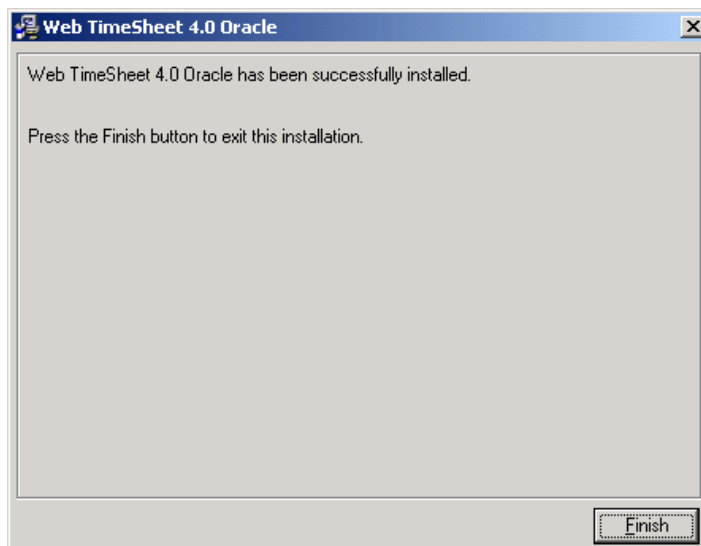
11. Select the folder where you would like to have Web TimeSheet added, or keep the default, then click "Next".



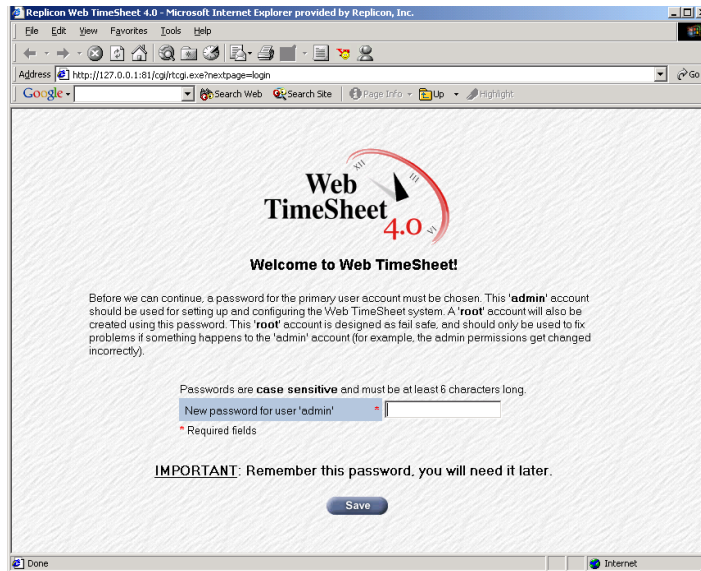
12. "You are now ready to install" window will appear. Click "Next" to begin installation.

**Note:** The installation can take several minutes, you will see a small window showing the percentage of the completed install.

13. After the installation has finished a window will be displayed stating that Web Timesheet has been installed successfully. Click the "Finish" button to exit.



14. You will be automatically taken to Web Timesheet screen, and you will be prompted to supply passwords for the admin and root users. Please remember these passwords, you will need them when logging into Web Timesheet. Please remember that all passwords are case sensitive and must be at least 6 characters long. After entering the passwords Click “Next”



15. After you have clicked the “Next” button you will be asked to login as admin with the password you have just supplied for that account. Then you will be taken into the System Configuration screen. Please read the information very carefully so you can use Web Timesheet as per your company’s preference. Then you will be asked to set up the Approval screens. Once these screens are set up you will be taken to the first screen of Web Timesheet and are then ready to begin populating the system with your company’s information.



## **Contacting Technical Support**

---

If Web TimeSheet does not load after installation or if you encounter other technical difficulties, please contact Replicon's Support Team between 9:00 AM and 8:00 PM, EST (7:00am – 6:00pm GMT):

In North America, toll free 1-877-737-5420, ext. 3

Outside of North America, toll free 1-800-7375-4266, ext. 3

You also may e-mail the Support Team at [support@replicon.com](mailto:support@replicon.com).